



# VIRTUAL PARACHUTE TRAINING SYSTEM

**Pennant** 

[WWW.PENNANTPLC.CO.UK](http://WWW.PENNANTPLC.CO.UK)

Contact: [sales@pennantplc.co.uk](mailto:sales@pennantplc.co.uk)

**VPTS** 

PRODUCT BROCHURE

# INTRODUCTION

Pennant created the VPTS to provide a realistic and completely immersive training environment suitable for initial training through to mission planning. Each jump is completely customisable; from weather, light, environment to number of parachutists in a stick, all of whom have to react to each other during the descent (the system is compatible with commercially available throat or headset microphones enabling parachutists to talk to each other).

You can even add one of 29 malfunctions/nuisance factors!

VPTS uses Unity virtual reality technology in conjunction with a motion suit, head-mounted display and an off-floor suspension rig to provide the student with an unrivalled totally immersive and interactive training experience.

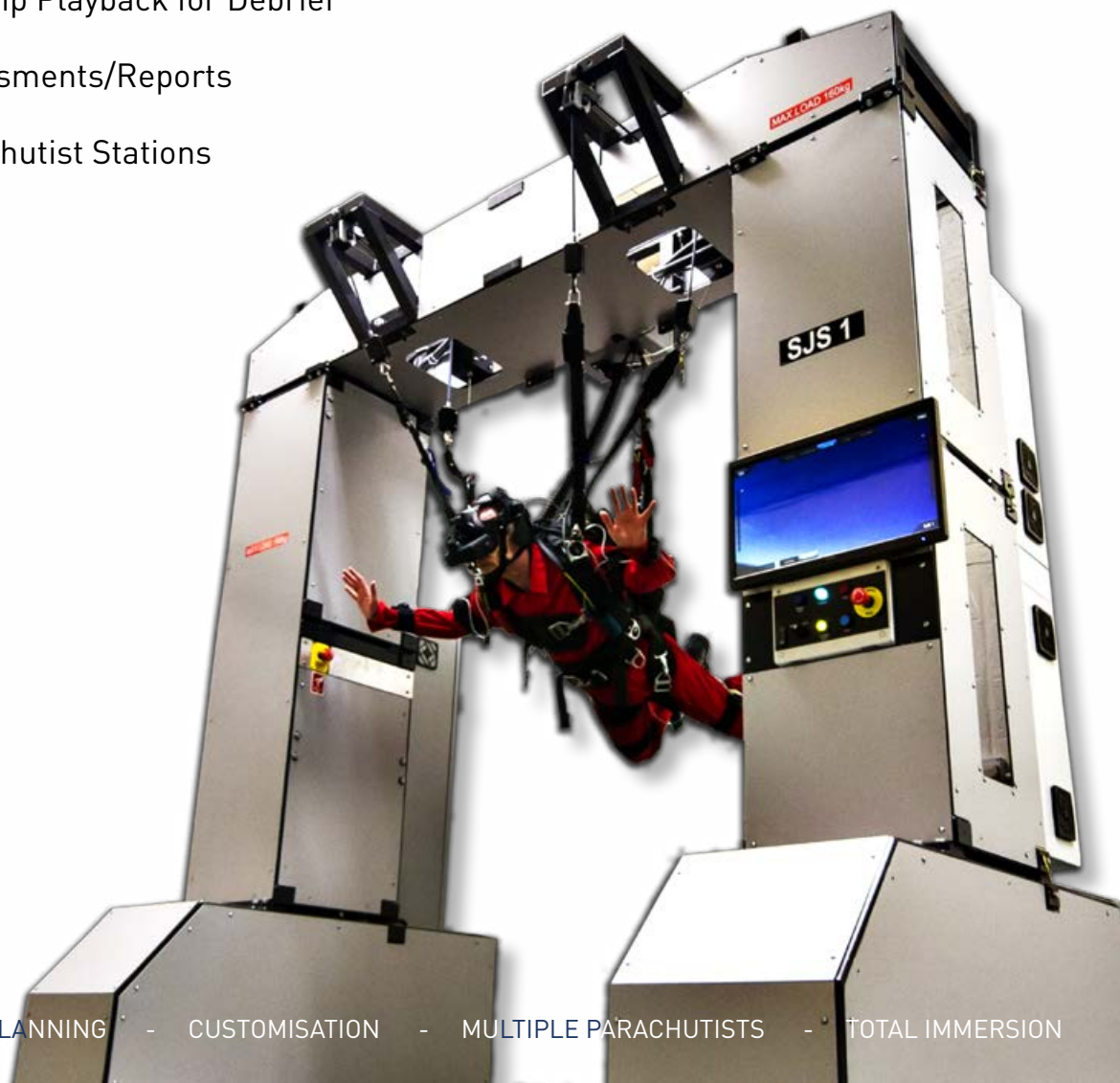
In the development of the VPTS we collaborated with several military parachute training schools from around the world; we know that the VPTS provides the best immersive and completely adaptable virtual parachute training in the world.





# KEY FEATURES

- Body Attitude Change From Freefall To Under Canopy
- Mission Planning And Rehearsal
- Pre Jump, Parachutists brief from exiting the aircraft to landing on DZ
- Selectable Parachute Types
- Customisable Weather Conditions
- Customisable Geographic Location
- Instructor Induced Malfunctions
- Multiple Simultaneous Parachutists (all with radio communications with their stick)
- Student Monitoring On An Individual Basis (including in flight communications with instructor)
- Parachute Jump Records Retain
- Parachute Jump Playback for Debrief
- Student Assessments/Reports
- Up to 16 Parachutist Stations



# CANOPY TYPES

## CANOPIES – STATIC LINE

- MC1
- LLP
- BT80 SL
- BT380

Additional Canopies - Available upon request.

## CANOPIES – FREEFALL

- Tandem Phoenix
- Spectre Sports
- Hi Glide
- Intruder 360
- BT80 FF
- BT533 Tandem Harness
- LPS 190
- LPS 210
- LPS 230
- LPS 260

Additional Canopies - Available upon request.

# AVATAR OPTIONS

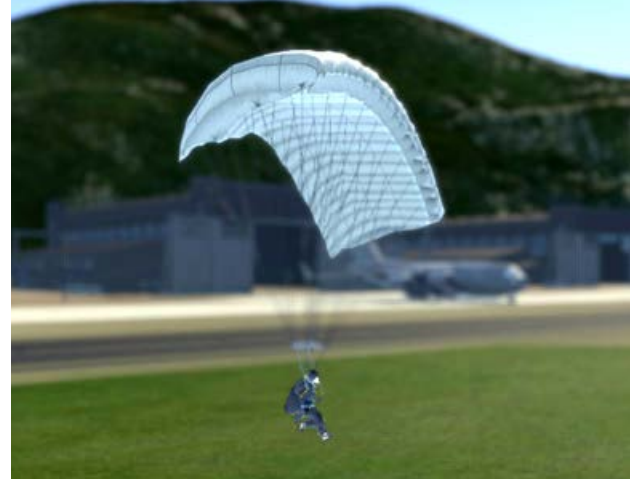
The Avatar is completely customisable depending on role, environment, parachute type, time of day and equipment you would like him to have.

Additional Customisation options on avatars available upon request.

# EQUIPMENT

The equipment is totally Customisable depending on your training needs.

- Bergen/Full pack
- Helmet Attachment (NVG Options x 4)
- Night Lights
- Compass
- GPS
- Utility Pouch
- PADS - Automated Flight
- Additional Equipment - Available upon request



# SCENARIO

Customisable Time Of Day And Weather Depending On Scenario:

- Dawn
- Rain
- Midday
- Snow
- Evening
- Cloud heights, top and bottom
- Night
  
- Customisable Wind Layers at 1000ft intervals up to 25,000ft
- Customisable Drop Order
- User Profile Management
- Customisable Release, Landing Points and exit altitude up to 25,000ft
- Multiple Release Points i.e. BT533 followed by BT80.

# AIRCRAFT

- Tailgate Exit Generic C130
- Side door Exit Generic C130
- Tailgate Exit Chinook
- Side door Exit C17
- Custom Aircraft

# SCENARIO RUNTIME FEATURES

Camera Control for Student Jump Station (SJS) Views.

# TERRAIN DATABASES

- Generic Desert Terrain
- Generic Temperate Terrain
- Terrain Database Editor
- Custom Terrain Databases
- Terrain Database Importer (Optional)

Using high speed gaming technology we can provide accurate terrain simulation from anywhere in the world. Coupled with all our other customisable features we know you will not get this level of real time pre mission simulation anywhere else.

# MALFUNCTIONS

## MALFUNCTION AND NUISANCE FACTOR PACKS

- End Cell Closure - Recoverable
- End Cell Closure - Non Recoverable
- No Canopy
- Streaming Malfunction
- Line Over Malfunction
- Broken Steering Line
- Steering Line Restriction
- Broken Rigging Line
- Holes/Torn Canopy
- Malformed Canopy
- High Twists
- Low Twists
- Bag Lock
- Horse Shoe
- Deteriorating Canopy Tear
- Container Closure
- RSL Not Attached
- Hung up Parachutist

## DUAL CANOPY:

- Side by side
- Biplane
- Downplane

Additional Malfunctions - Available upon request.

# LANGUAGE PACKS

English, Polish, French, Italian, Arabic, Spanish.  
Additional Language Packs available on request.





# ASSESSMENT MODULE

- Pull Rip Cord
- Check Canopy/Look Up
- Left Turn
- Right Turn
- Flare 1
- Flare 2
- Enter Holding Area (HA)
- Cut Away
- Leave HA
- Release Equipment
- Turn into Wind
- Final Flare
- Direction of Wind at Landing Point (LP)
- Direction to Wind at 200ft
- Distance from LP
- Landing Speed
- All Round Observation (ARO)

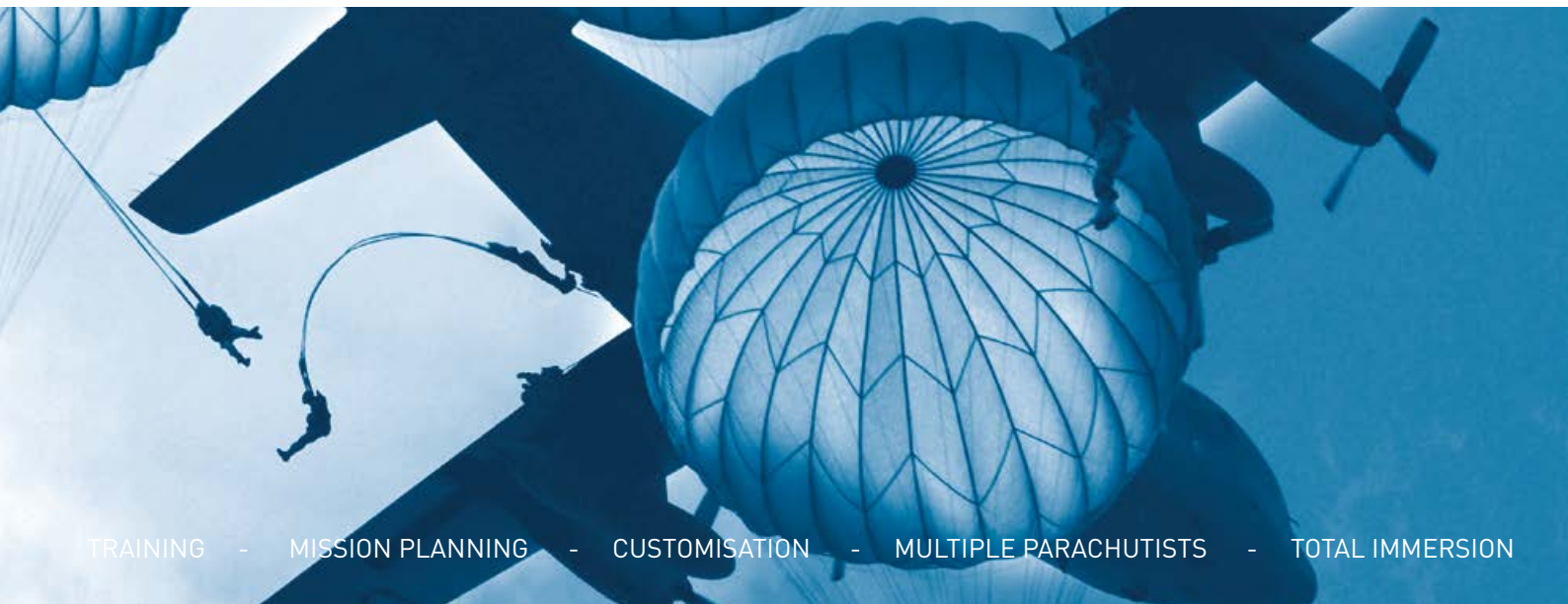
Printable PDF Report.

# AFTER ACTION REPLAY MODULE

Load/Save/Playback Recorded Descents - perfect for parachutist brief.

# INSTRUCTOR CONTROLLED CHARACTER (ICC)

Controller operated character.





**Pennant**

This document is copyright © 2018 Pennant International Group Plc. All rights reserved. This document is provided for information purposes only; contents are subject to change without notice. It is not warranted to be error-free, nor subject to any other warranties or conditions including implied warranties and conditions of merchantability or fitness for a particular purpose.

ISSUE 1